

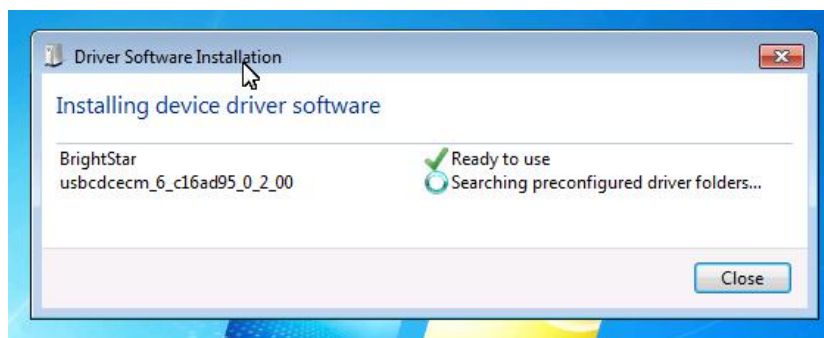
How to use Chrysler wiTech MicroPod 2 Diagnostic Programming Tool ?

1. Please confirm that you have successfully installed the software.

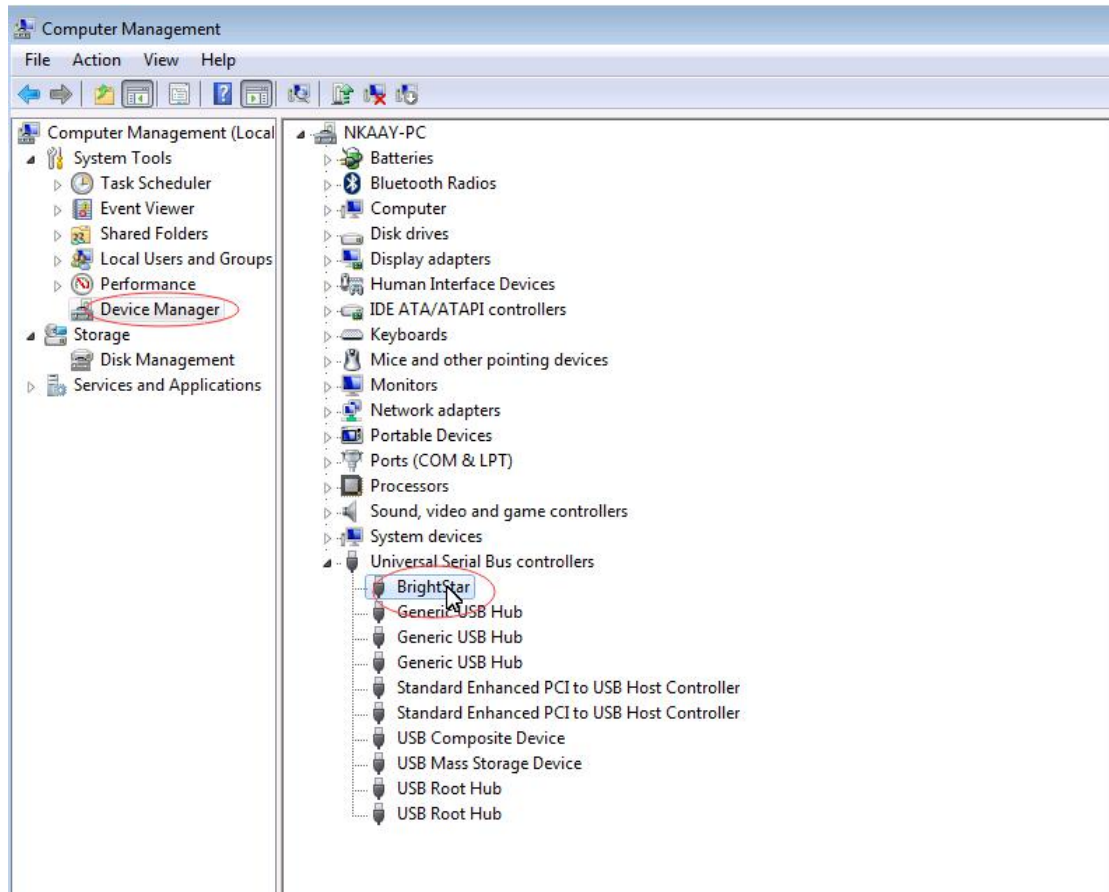
If you don't know how to install Chrysler wiTech MicroPod 2 software, please check [this link](http://www.obd2tool.com/blog/2017/05/12/how-to-install-chrysler-witech-micropod-2-diagnostic-programming-tool/):
<http://www.obd2tool.com/blog/2017/05/12/how-to-install-chrysler-witech-micropod-2-diagnostic-programming-tool/>

2. Connect Chrysler wiTech MicroPod 2 USB Port with PC, OBD2 Port connect with car.

3 . The computer will automatically install Chrysler wiTech MicroPod 2 hardware driver



4 . After Drive installed, you can find your device in your computer device manager



5 . Double click the icon of Chrysler wiTech MicroPod 2



6 . You will see Chrysler wiTech MicroPod 2 connected with software, Please click " next"

17.03.10 9:32/13

Connection Wizard

Select Tool

Double-click row or select tool and press "Next". List refreshes automatically as tools are added or removed.

☐ Hide Unresponsive Devices

Device	Year	Body	IP Address	Workgroup	Interface	Locked	Lock Owner
RDM-WMP-00000	????	??	172.22.22.22		usb		

☐ Work in standalone mode

Modify Location Profiles

Next

7. If you have your personal online account, you can login in your user id and password. If you don't have online account, please select "word off line", Then click "finish" and go to next step

17.03.10 9:47/13

Connection Wizard

DealerCONNECT Login

Enter your User ID, Password and Dealer Code, then press "Finish" to log in to DealerCONNECT.

Warning! Access to Chrysler's computer systems is controlled. UNAUTHORIZED ACCESS OR USE IS STRICTLY PROHIBITED. Authorized users are hereby informed that Chrysler management may monitor this use and ensure compliance. Chrysler may terminate access privileges, take disciplinary action and/or institute civil or criminal proceedings to enforce this policy.

User ID:

Password:

Dealer Code:

Remember: ☐

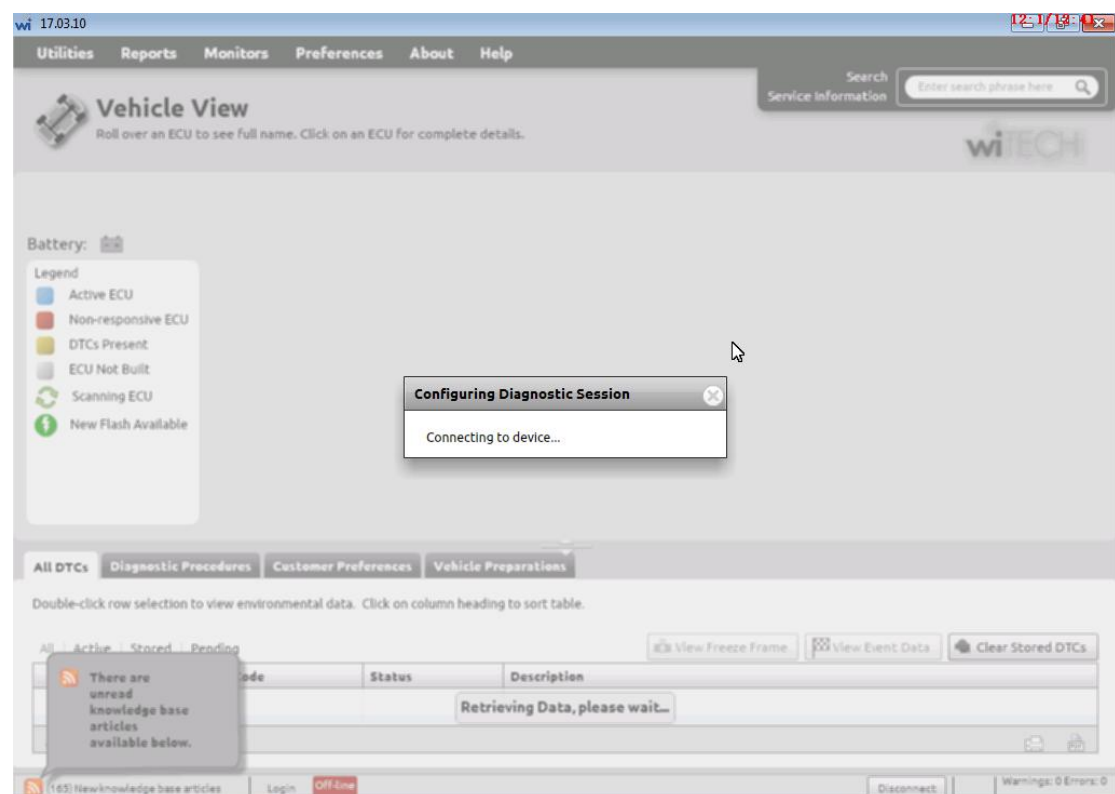
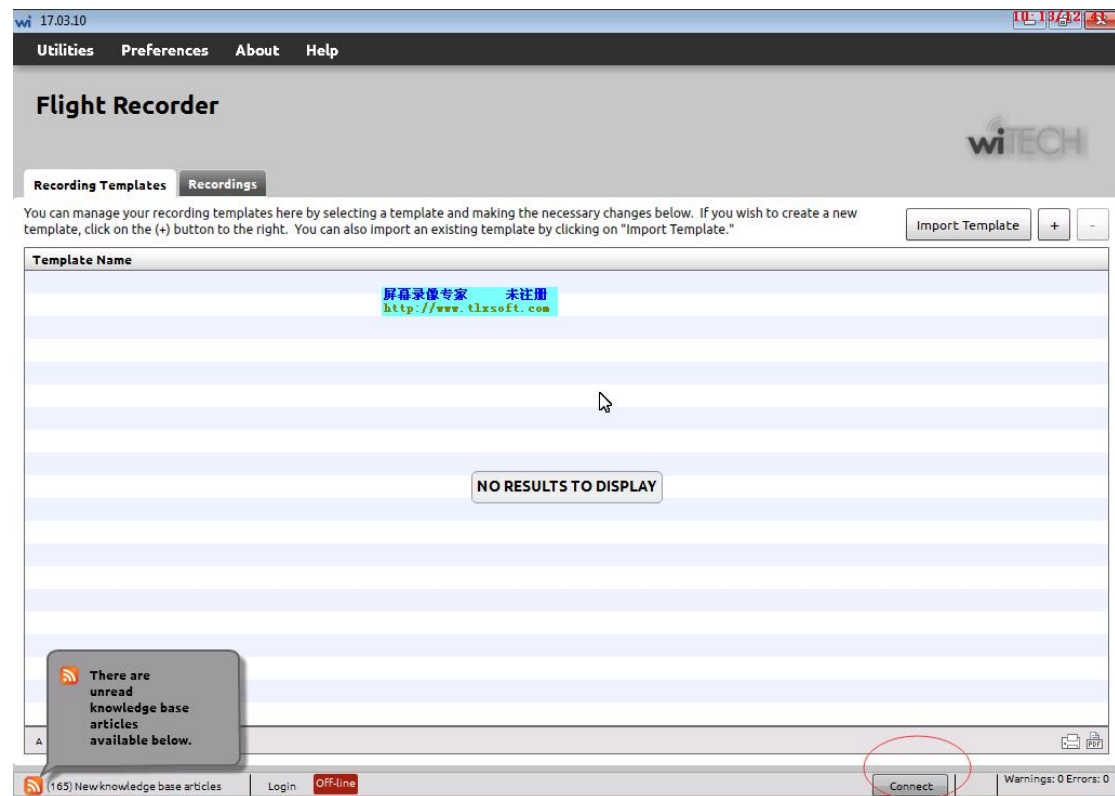
Change Server:

☒ Work Off Line

Connecting to device...

Finish

8. Select "Connect"



9. To this step, you can choose the type of car which you want to test and the system for diagnosis and programming.